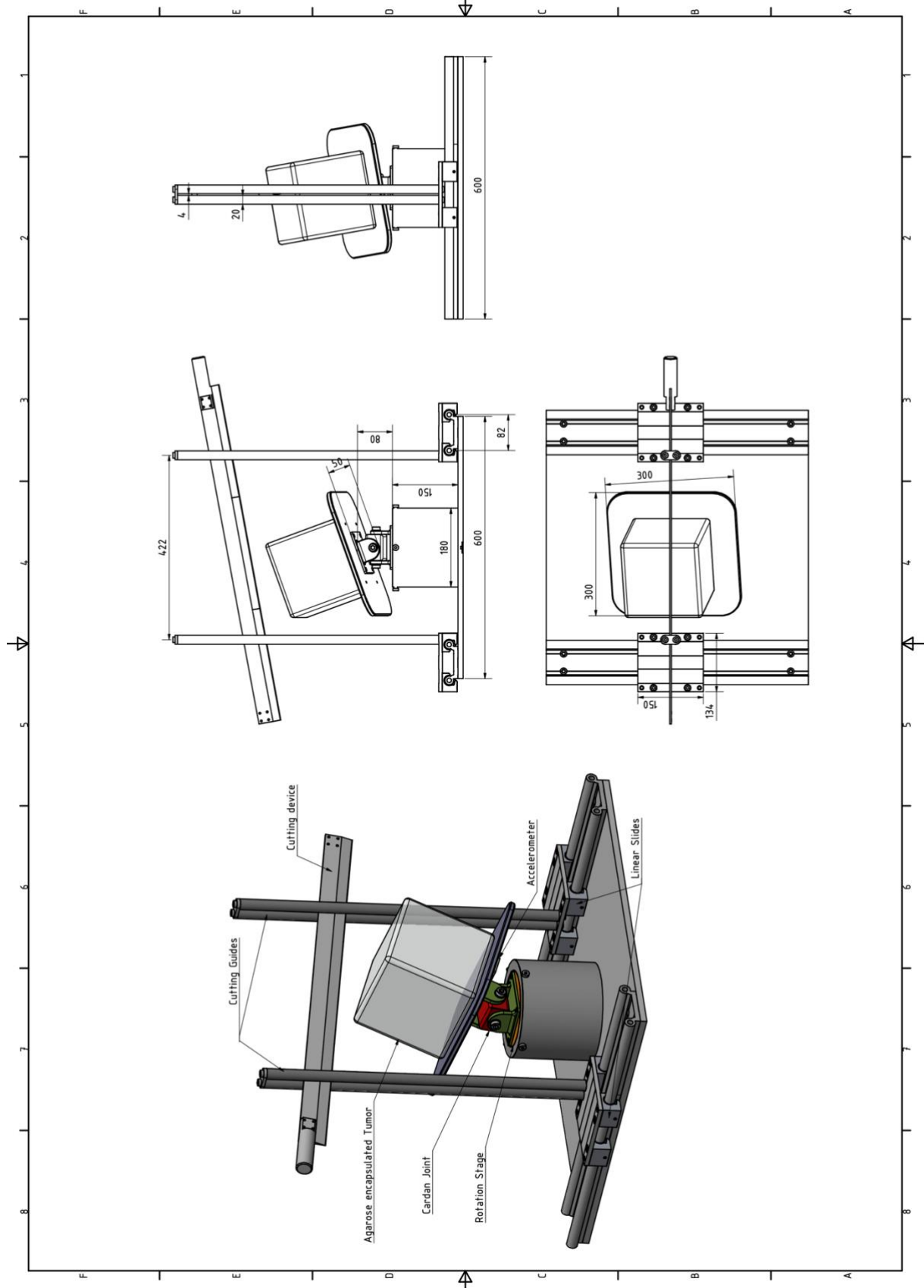


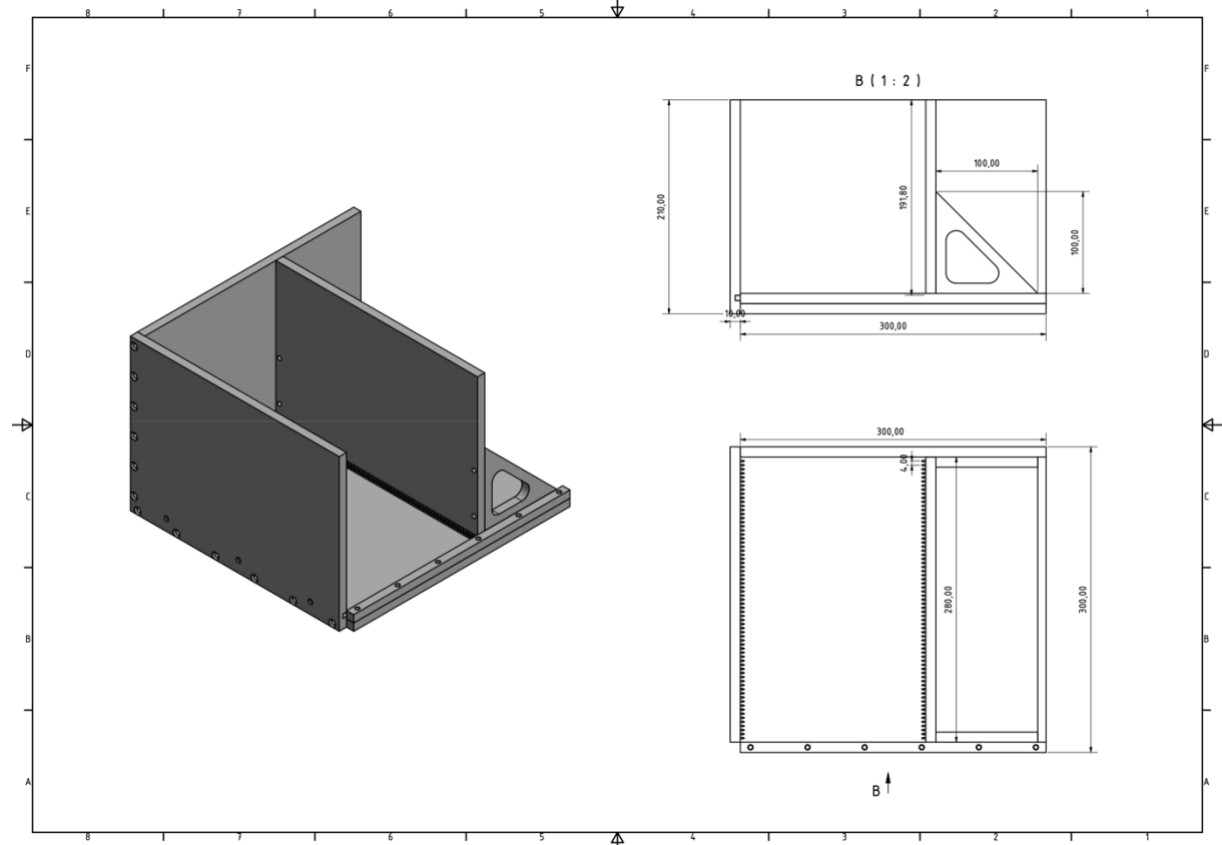
Figure 1: Technical Drawing of the custom-built angle plate.



A cardan joint with fixation screws was used to angulate the tumor, and a three axis accelerometer (Pololu LSM6DS33) was mounted below the support panel to measure the two angles towards the xy-plane. A ball bearing enabled the rotation of the angulation stage

and the rotational position was recorded using a rotational encoder (Broadcom AEDM-2000). All data was gathered using a microcontroller (PJRC Teensy 4.1) and then displayed in a Matlab GUI via a serial USB connection. Standard for the exchange of product model data (STEP) file is provided online as supplemental data.

Figure 2: Technical Drawing of the custom-built localizer



Note the variable side wall for different tumor sizes. A 4 mm measuring grid is attached to both sidewalls that is visible on MRI as a negative in the agarose block. Standard for the exchange of product model data (STEP) file is provided online as supplemental data.

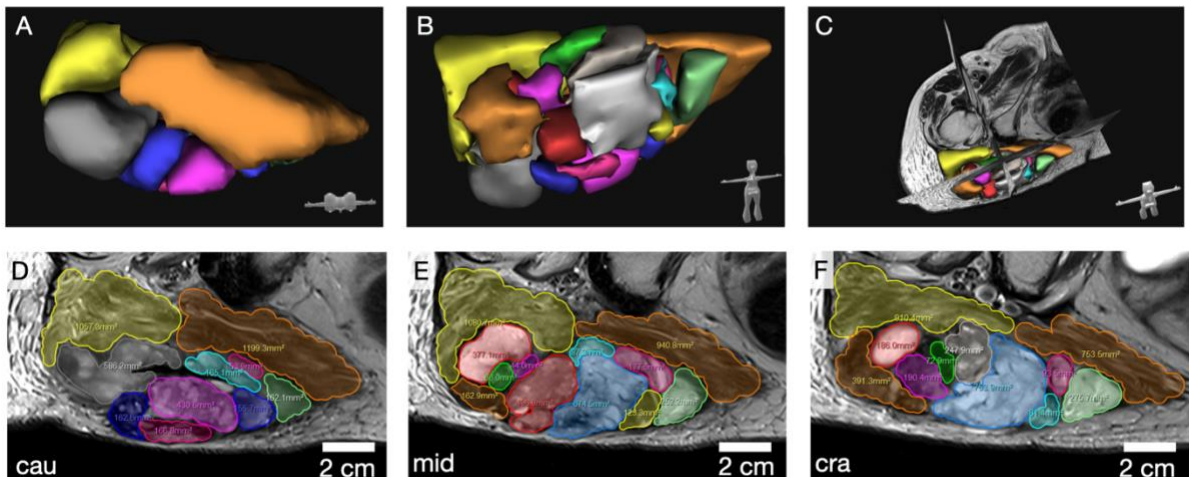
Technical drawing of a rectangular container, showing three views: isometric, side elevation, and top plan.

Isometric View: Shows a rectangular container with a green interior, mounted on a base plate. A handle is attached to the right side.

Side Elevation View: Shows the container's profile. Dimensions include a total width of 580,05, an internal width of 348,75, and a height of 200,00. A base thickness of 20,00 is indicated.

Top Plan View: Shows the container's footprint. Dimensions include a total width of 580,05, an internal width of 348,45, and a total depth of 540,00. The internal depth is 300,00, with a 22,10 offset from the side. A base thickness of 20,00 is indicated. A handle is shown on the right side.

Figure 4: Illustrative relationship of TRE to spatial scale of STS heterogeneity



3